

Architectural floor plan of a building with various rooms and dimensions. The plan includes a large central hall (N1-ø6.3-305), a smaller room (N2-ø6.3-125), a room (N3-ø6.3-175), a room (N4-ø6.3-223), and a room (N5-ø6.3-205). Dimensions are provided for various sections and rooms.

Rooms and Dimensions:

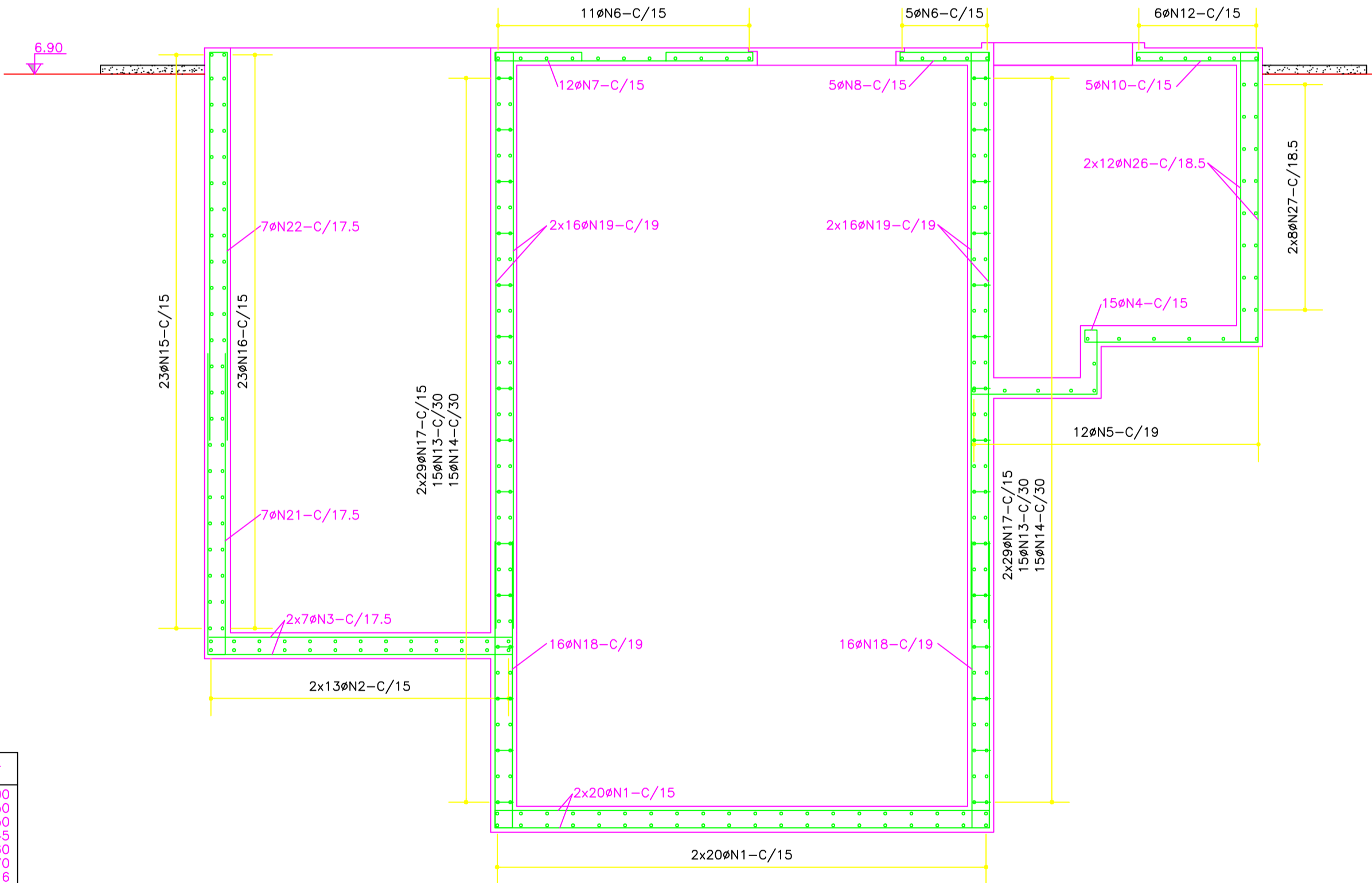
- N1-ø6.3-305 (Main Hall)
- N2-ø6.3-125 (Room)
- N3-ø6.3-175 (Room)
- N4-ø6.3-223 (Room)
- N5-ø6.3-205 (Room)

Dimensions and Section Labels:

- 2x13øN2-C/15
- 2x7øN3-C/17.5
- 2x20øN1-C/15
- 15øN4-C/15
- 12øN5-C/19
- 285 (Overall width)
- 105 (Overall height)
- 10 (Overall depth)
- 72 (Overall depth)
- 7 (Overall depth)
- 37 (Overall depth)
- 100 (Overall depth)

[illegible][illegible]

RELÇÃO DO AÇO				
N	DIAM	Q	UNIT (cm)	C.TOTAL (cm)
1	6,3	80	305	24400
2	6,3	22	125	2750
3	6,3	14	175	2450
4	6,3	15	223	3345
5	6,3	22	205	2460
6	6,3	26	495	12870
7	6,3	12	268	3216
8	6,3	15	112	1680
9	6,3	10	386	3860
10	6,3	5	750	3750
11	6,3	10	136	1360
12	8,0	6	365	2190
13	8,0	60	200	12000
14	8,0	60	220	13200
15	6,3	23	235	5405
16	6,3	23	275	6325

[illegible]